

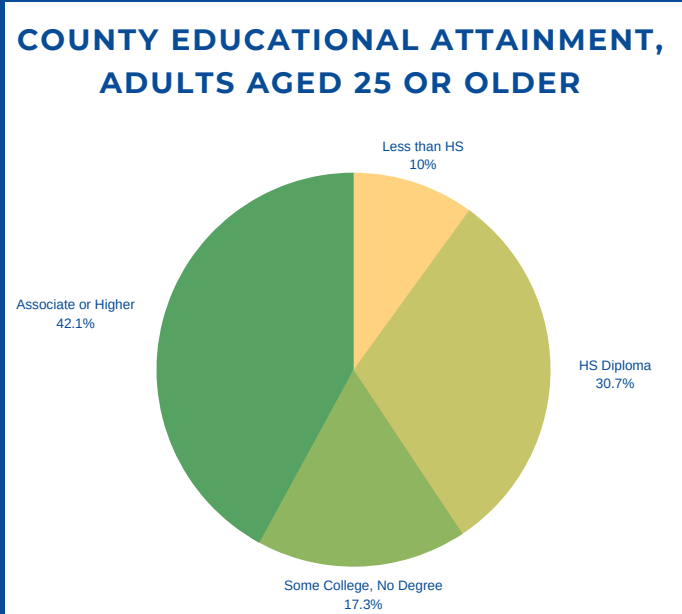


# ADULT EDUCATION BY THE NUMBERS

## NEW HAVEN COUNTY, CONNECTICUT

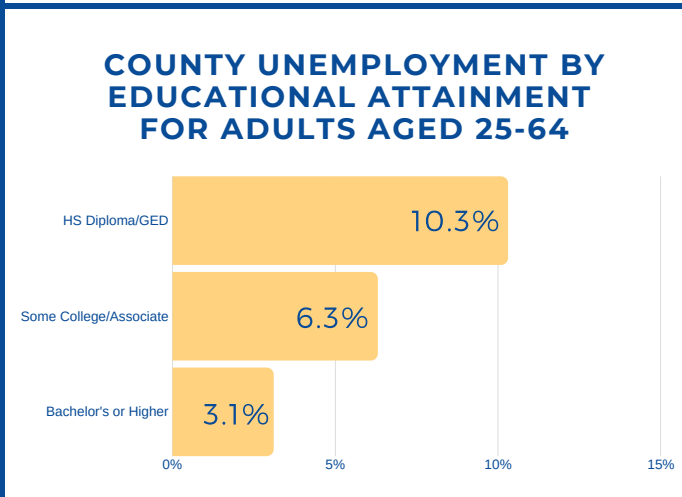
AS OF SEPTEMBER 2019

SOCIOECONOMIC PROFILE	COUNTY	CT	AGE DISTRIBUTION OF COLLEGE STUDENTS IN CONNECTICUT (2017)	
Median Annual Household Income:	\$64,872	\$73,781		
Population in Poverty Rate (25 or Older)	7.9%	8.3%	Under 18	3.1%
Unemployment Rate (Pop. 25-64 Years)	6.6%	6.1%	18-24	64.2%
Population (Aged 25 or older)	595,779	2,480,297	25-49	29.5%
Total Population Growth (2013-2018)	-0.6%	-0.62%	50-64	2.7%
Median Age (2018)	40.3	41.0	65 and Older	0.5%



### TOP ADULT-SERVING INSTITUTIONS BY NUMBER OF ADULTS AGED 25+ SERVED THAT ARE NEAREST TO NEW HAVEN COUNTY

- Yale University (New Haven, CT)**  
Private, non-profit | 4-Year  
**5,196** Adults Aged 25+ Enrolled (2017)
- Gateway Community College (New Haven, CT)**  
Public | 2-Year  
**2,802** Adults Aged 25+ Enrolled (2017)
- Southern Connecticut State Univ. (New Haven, CT)**  
Public | 4-Year  
**2,800** Adults Aged 25+ Enrolled (2017)



### INCREASING THE ADULT COLLEGE ATTAINMENT RATE NEW HAVEN COUNTY

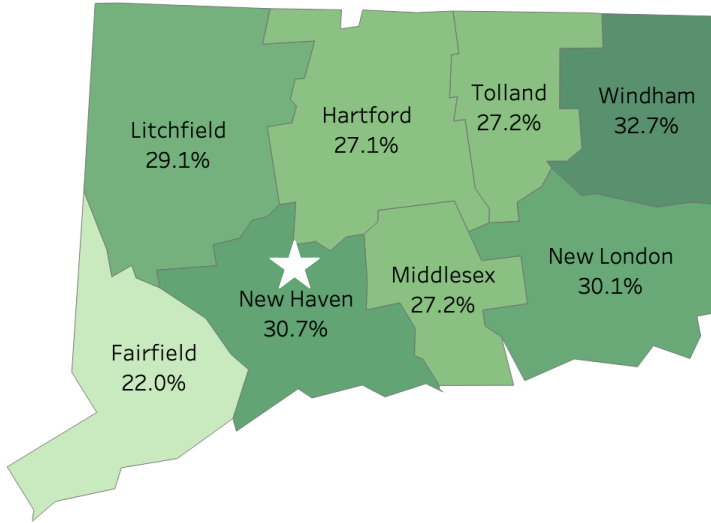
To increase the county's adult attainment rate by **5%**

# 12,511

additional individuals aged 25 or older must complete a postsecondary degree program (associate or higher)

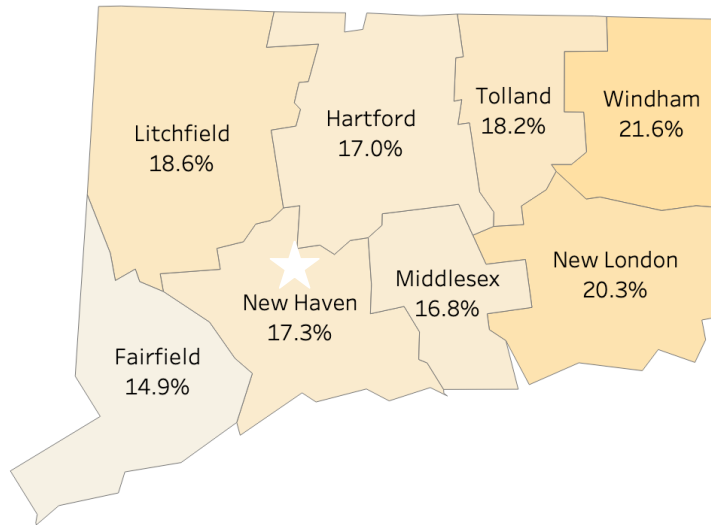
# ADULT EDUCATION BY THE NUMBERS: HARTFORD COUNTY, CONNECTICUT

## Profile of Adults (Aged 25 or Older) with HS Diploma/GED as Highest Degree, 2017



ADULT EDUCATIONAL ATTAINMENT	COUNTY	CT
Percent w/HS Diploma/GED Only	30.7%	27.2%
Pop. Total w/HS Diploma/GED Only	182,609	673,582
Median Annual Income (2017)	\$35,195	\$35,212
Unemployment Rate (Pop. 25-64 Years)	10.3%	8.8%
Poverty Rate (25 Years or Older)	11.9%	10.7%

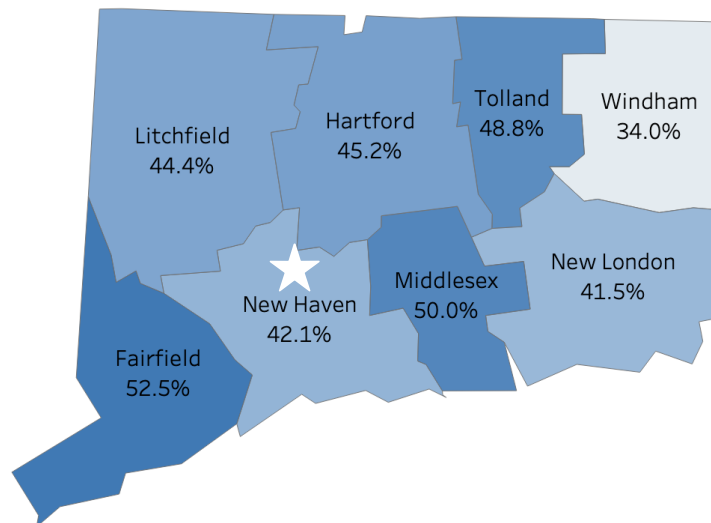
## Profile of Adults (Aged 25 or Older) with Some College, No Degree, 2017



ADULT EDUCATIONAL ATTAINMENT	COUNTY	CT
Percent w/Some College, No Degree	17.3%	17.0%
Pop. Total w/Some College, No Degree	103,506	422,535
Median Annual Income (2017)*	\$41,169	\$41,490
Unemployment Rate (Pop. 25-64 Years)*	6.3%	6.4%
Poverty Rate* (25 Years or Older)	8.5%	7.5%

\* Due to limitations in the available data from the Census Bureau, these figures are for individuals with some college or an associate degree.

## Profile of Adults (Aged 25 or older) with Associate Degree or Higher, 2017



ADULT EDUCATIONAL ATTAINMENT	COUNTY	CT
Percent w/Associate Degree or Higher	42.1%	46.1%
Pop. Total w/Associate Degree or Higher	250,223	1,141,680
Median Annual Income (2017)*	\$56,741	\$61,933
Unemployment Rate (Pop. 25-64 Years)*	3.1%	3.3%
Poverty Rate* (25 Years or Older)	4.3%	3.4%

\* Due to limitations in the available data from the Census Bureau, these figures are for individuals with a bachelor's degree or higher.

SOURCES: NEBHE analysis of data from the U.S. Census Bureau (2018 American Community Survey, 2017 Economic Census) and National Center for Education Statistics, IPEDS