

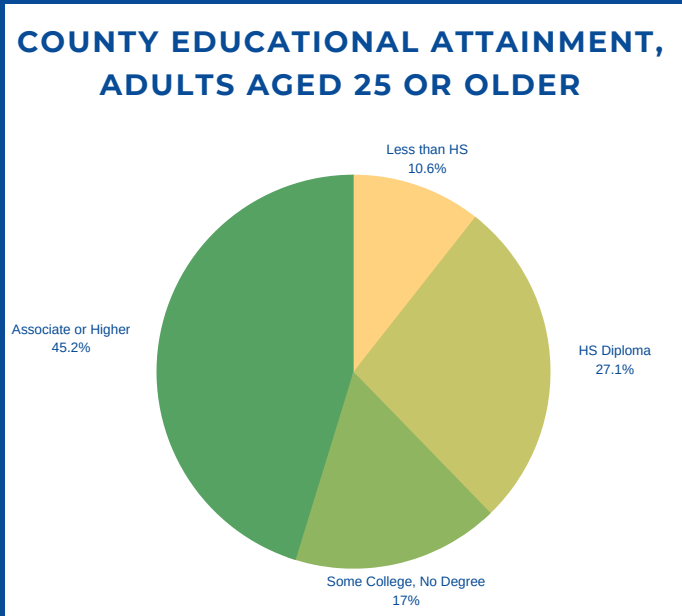


ADULT EDUCATION BY THE NUMBERS

HARTFORD COUNTY, CONNECTICUT

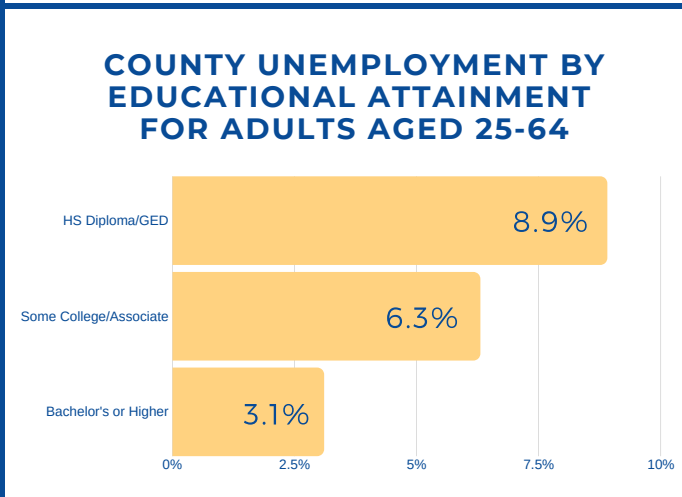
AS OF SEPTEMBER 2019

SOCIOECONOMIC PROFILE	COUNTY	CT	AGE DISTRIBUTION OF COLLEGE STUDENTS IN CONNECTICUT (2017)	
Median Annual Household Income:	\$69,936	\$73,781		
Population in Poverty Rate (25 or Older)	7.8%	8.3%	Under 18	3.1%
Unemployment Rate (Pop. 25-64 Years)	6.0%	6.1%	18-24	64.2%
Population (Aged 25 or older)	622,863	2,480,297	25-49	29.5%
Total Population Growth (2013-2018)	-0.6%	-0.62%	50-64	2.7%
Median Age (2018)	40.2	41.0	65 and Older	0.5%



TOP ADULT-SERVING INSTITUTIONS BY NUMBER OF ADULTS AGED 25+ SERVED THAT ARE NEAREST TO HARTFORD COUNTY

- Goodwin College (Hartford, CT)**
Private, non-profit | 2-Year
2,343 Adults Aged 25+ Enrolled (2017)
- Capital Community College (Hartford, CT)**
Public | 2-Year
1,793 Adults Aged 25+ Enrolled (2017)
- University of Hartford (West Hartford, CT)**
Private, non-profit | 4-Year
1,453 Adults Aged 25+ Enrolled (2017)



INCREASING THE ADULT COLLEGE ATTAINMENT RATE HARTFORD COUNTY

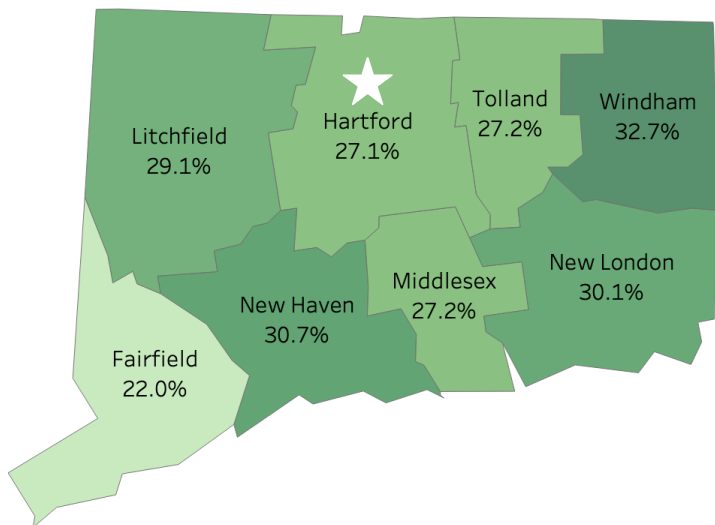
To increase the county's adult attainment rate by **5%**

16,882

additional individuals aged 25 or older must complete a postsecondary degree program (associate or higher)

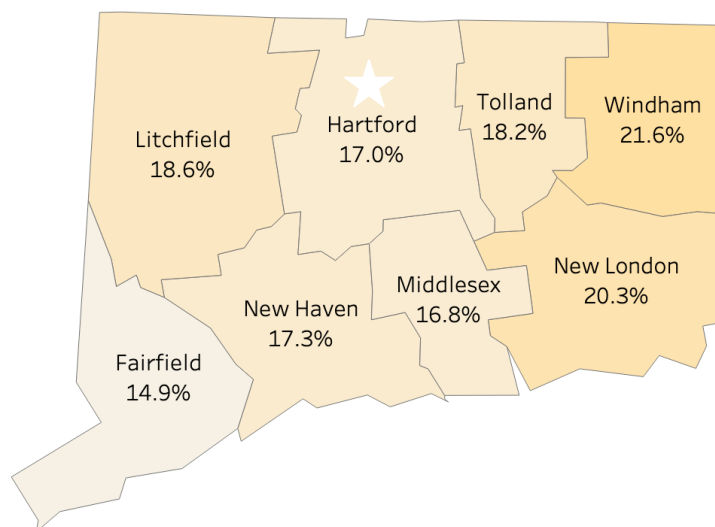
ADULT EDUCATION BY THE NUMBERS: HARTFORD COUNTY, CONNECTICUT

Profile of Adults (Aged 25 or Older) with HS Diploma/GED as Highest Degree, 2017



ADULT EDUCATIONAL ATTAINMENT	COUNTY	CT
Percent w/HS Diploma/GED Only	27.1%	27.2%
Pop. Total w/HS Diploma/GED Only	169,040	673,582
Median Annual Income (2017)	\$35,931	\$35,212
Unemployment Rate (Pop. 25-64 Years)	8.9%	8.8%
Poverty Rate (25 Years or Older)	11.6%	10.7%

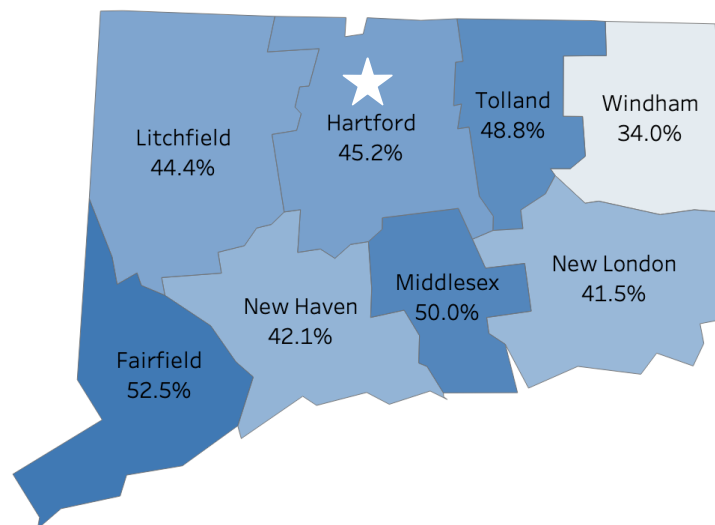
Profile of Adults (Aged 25 or Older) with Some College, No Degree, 2017



ADULT EDUCATIONAL ATTAINMENT	COUNTY	CT
Percent w/Some College, No Degree	17.0%	17.0%
Pop. Total w/Some College, No Degree	105,576	422,535
Median Annual Income (2017)*	\$41,127	\$41,490
Unemployment Rate (Pop. 25-64 Years)*	6.3%	6.4%
Poverty Rate* (25 Years or Older)	7.9%	7.5%

* Due to limitations in the available data from the Census Bureau, these figures are for individuals with some college or an associate degree.

Profile of Adults (Aged 25 or older) with Associate Degree or Higher, 2017



ADULT EDUCATIONAL ATTAINMENT	COUNTY	CT
Percent w/Associate Degree or Higher	45.2%	46.1%
Pop. Total w/Associate Degree or Higher	282,097	1,141,680
Median Annual Income (2017)*	\$61,617	\$61,933
Unemployment Rate (Pop. 25-64 Years)*	3.1%	3.3%
Poverty Rate* (25 Years or Older)	3.2%	3.4%

* Due to limitations in the available data from the Census Bureau, these figures are for individuals with a bachelor's degree or higher.

SOURCES: NEBHE analysis of data from the U.S. Census Bureau (2018 American Community Survey, 2017 Economic Census) and National Center for Education Statistics, IPEDS