

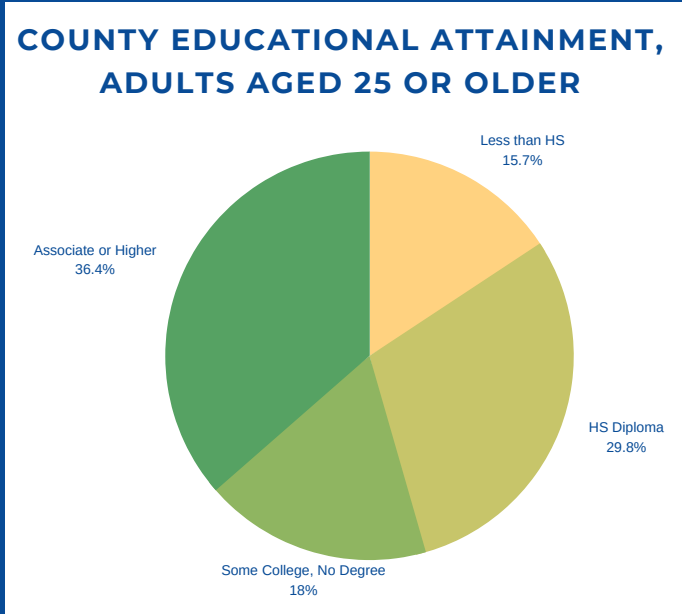


ADULT EDUCATION BY THE NUMBERS

BRISTOL COUNTY, MASSACHUSETTS

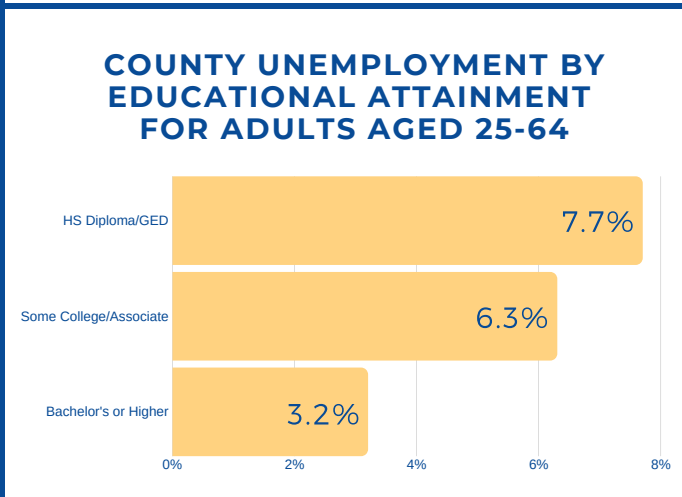
AS OF SEPTEMBER 2019

| SOCIOECONOMIC PROFILE | COUNTY | MA | AGE DISTRIBUTION OF COLLEGE STUDENTS IN MASSACHUSETTS (2017) | |
|--|----------|-----------|--|-------|
| Median Annual Household Income: | \$62,514 | \$74,167 | | |
| Population in Poverty Rate (25 or Older) | 10.4% | 9.2% | Under 18 | 1.7% |
| Unemployment Rate (Pop. 25-64 Years) | 6.0% | 5.0% | 18-24 | 63.2% |
| Population (Aged 25 or older) | 387,417 | 4,706,536 | 25-49 | 31.9% |
| Total Population Growth (2013-2018) | +2.1% | +2.8% | 50-64 | 2.6% |
| Median Age (2018) | 41.0 | 39.4 | 65 and Older | 0.3 |



TOP ADULT-SERVING INSTITUTIONS BY NUMBER OF ADULTS AGED 25+ SERVED THAT ARE NEAREST TO BRISTOL COUNTY

- Bristol Community College (Fall River, MA)**
Public | 2-Year
2,735 Adults Aged 25+ Enrolled (2017)
- UMass Dartmouth (North Dartmouth, MA)**
Public | 4-Year
2,268 Adults Aged 25+ Enrolled (2017)
- Stonehill College (Easton, MA)**
Private, non-profit | 4-Year
13 Adults Aged 25+ Enrolled (2017)



INCREASING THE ADULT COLLEGE ATTAINMENT RATE BRISTOL COUNTY

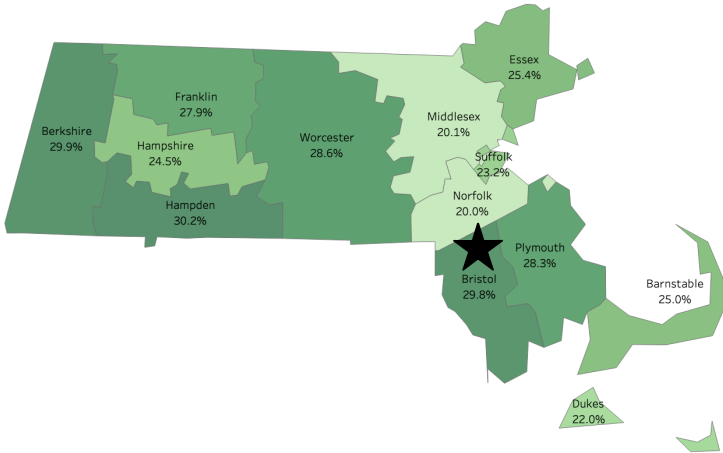
To increase the county's adult attainment rate by **5%**,

7,061

additional individuals aged 25 or older must complete a postsecondary degree program (associate or higher)

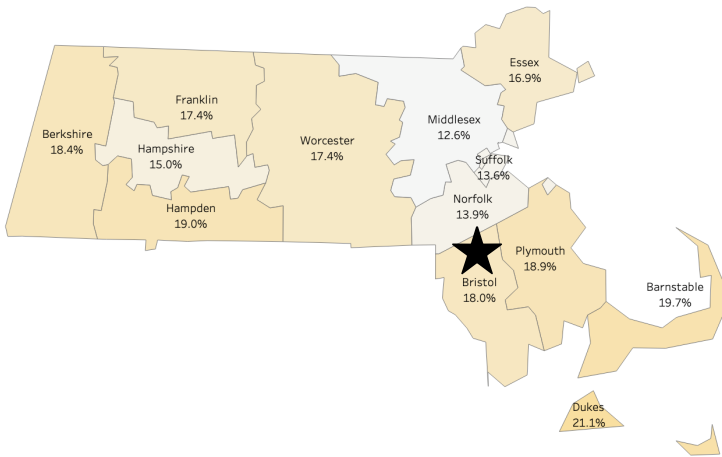
ADULT EDUCATION BY THE NUMBERS: BRISTOL COUNTY, MASSACHUSETTS

Profile of Adults (Aged 25 or Older) with HS Diploma/GED as Highest Degree, 2017



| ADULT EDUCATIONAL ATTAINMENT | COUNTY | MA |
|--------------------------------------|----------|-----------|
| Percent w/HS Diploma/GED Only | 29.8% | 24.7% |
| Pop. Total w/HS Diploma/GED Only | 115,589 | 1,162,683 |
| Median Annual Income (2017) | \$35,743 | \$34,296 |
| Unemployment Rate (Pop. 25-64 Years) | 7.7% | 7.5% |
| Poverty Rate (25 Years or Older) | 11.5% | 12.0% |

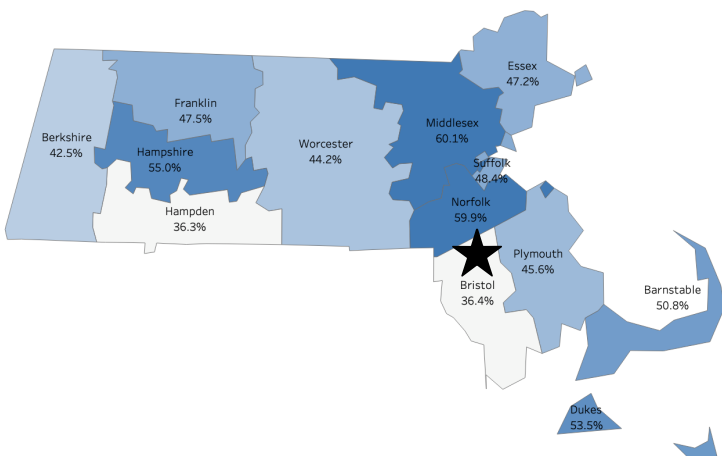
Profile of Adults (Aged 25 or Older) with Some College, No Degree, 2017



| ADULT EDUCATIONAL ATTAINMENT | COUNTY | MA |
|---------------------------------------|----------|----------|
| Percent w/Some College, No Degree | 18.0% | 15.8% |
| Pop. Total w/Some College, No Degree | 69,876 | 741,582 |
| Median Annual Income (2017)* | \$40,902 | \$40,597 |
| Unemployment Rate (Pop. 25-64 Years)* | 6.3% | 5.6% |
| Poverty Rate* (25 Years or Older) | 9.6% | 8.7% |

* Due to limitations in the available data from the Census Bureau, these figures are for individuals with some college or an associate degree.

Profile of Adults (Aged 25 or older) with Associate Degree or Higher, 2017



| ADULT EDUCATIONAL ATTAINMENT | COUNTY | MA |
|---|----------|-----------|
| Percent w/Associate Degree or Higher | 36.4% | 49.5% |
| Pop. Total w/Associate Degree or Higher | 141,225 | 2,344,191 |
| Median Annual Income (2017)* | \$58,377 | \$60,715 |
| Unemployment Rate (Pop. 25-64 Years)* | 3.2% | 3.0% |
| Poverty Rate* (25 Years or Older) | 3.4% | 4.2% |

* Due to limitations in the available data from the Census Bureau, these figures are for individuals with a bachelor's degree or higher.

SOURCES: NEBHE analysis of data from the U.S. Census Bureau (2018 American Community Survey, 2017 Economic Census) and National Center for Education Statistics, IPEDS