

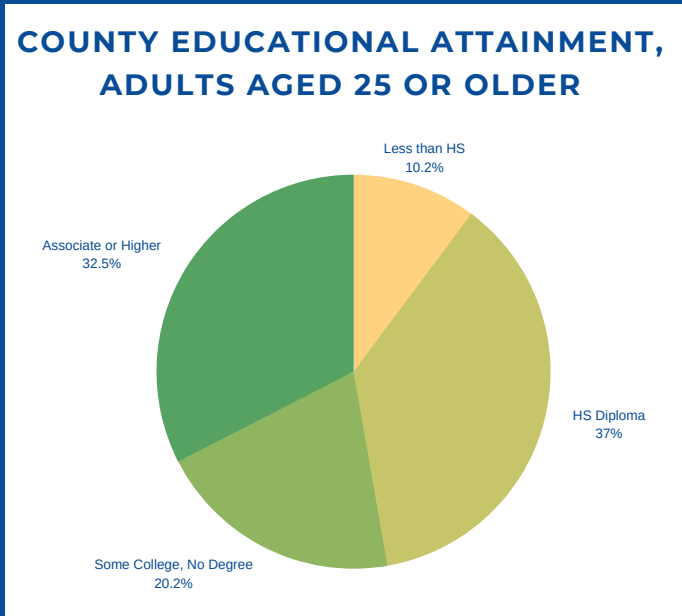


ADULT EDUCATION BY THE NUMBERS

ANDROSCOGGIN COUNTY, MAINE

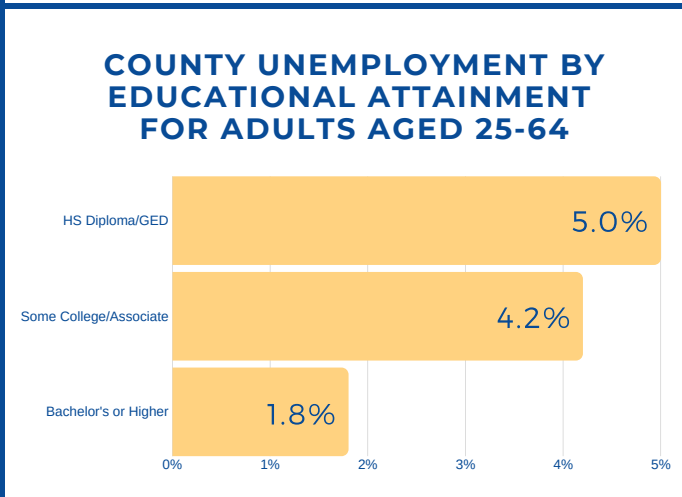
AS OF SEPTEMBER 2019

SOCIOECONOMIC PROFILE	COUNTY	ME	AGE DISTRIBUTION OF COLLEGE STUDENTS IN MAINE (2017)	
Median Annual Household Income:	\$49,538	\$53,024		
Population in Poverty Rate (25 or Older)	11.4%	10.9%	Under 18	8.4%
Unemployment Rate (Pop. 25-64 Years)	4.1%	4.3%	18-24	59.3%
Population (Aged 25 or older)	74,251	961,086	25-49	28.6%
Total Population Growth (2013-2018)	+0.4%	+0.8%	50-64	3.3%
Median Age (2018)	41.1	44.9	65 and Older	0.3%



TOP ADULT-SERVING INSTITUTIONS BY NUMBER OF ADULTS AGED 25+ SERVED THAT ARE NEAREST TO ANDROSCOGGIN COUNTY

- University of Southern Maine (Portland, ME)**
Public | 4-Year
3,202 Adults Aged 25+ Enrolled (2017)
- Central Maine Community College (Auburn, ME)**
Public | 2-Year
930 Adults Aged 25+ Enrolled (2017)
- Bates College (Lewiston, ME)**
Private, non-profit | 4-Year
3 Adults Aged 25+ Enrolled (2017)



INCREASING THE ADULT COLLEGE ATTAINMENT RATE ANDROSCOGGIN COUNTY

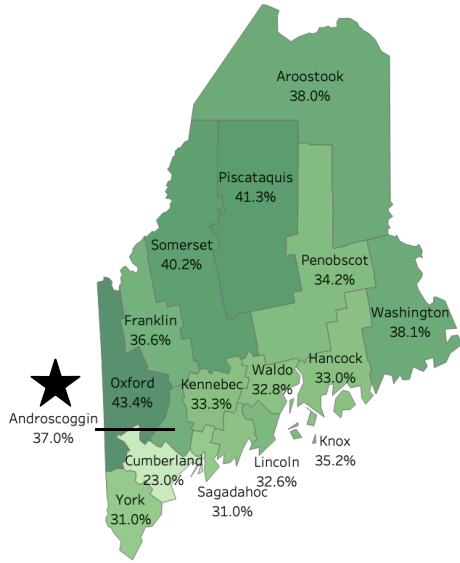
To increase the county's adult attainment rate by **5%**,

1,207

additional individuals aged 25 or older must complete a postsecondary degree program (associate or higher)

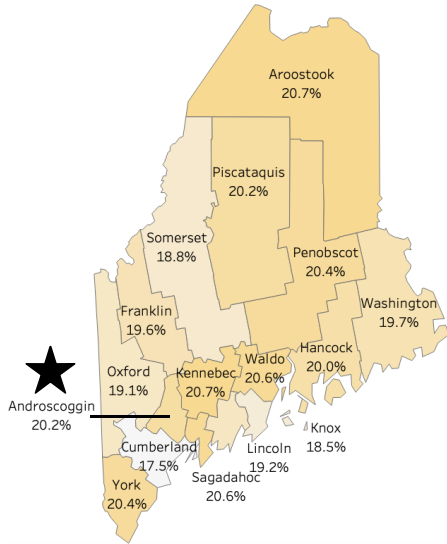
ADULT EDUCATION BY THE NUMBERS: ANDROSCOGGIN COUNTY, MAINE

Profile of Adults (Aged 25 or Older) with HS Diploma/GED as Highest Degree, 2017



ADULT EDUCATIONAL ATTAINMENT	COUNTY	ME
Percent w/HS Diploma/GED Only	37.0%	32.3%
Pop. Total w/HS Diploma/GED Only	27,506	310,724
Median Annual Income (2017)	\$30,393	\$27,830
Unemployment Rate (Pop. 25-64 Years)	5.0%	6.1%
Poverty Rate (25 Years or Older)	15.3%	14.6%

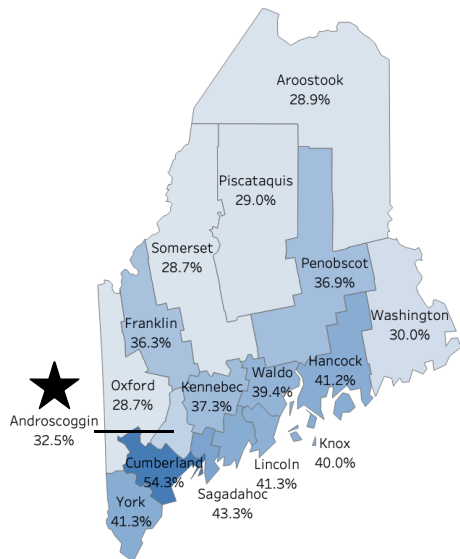
Profile of Adults (Aged 25 or Older) with Some College, No Degree, 2017



ADULT EDUCATIONAL ATTAINMENT	COUNTY	ME
Percent w/Some College, No Degree	20.2%	19.5%
Pop. Total w/Some College, No Degree	15,013	187,812
Median Annual Income (2017)*	\$34,144	\$33,037
Unemployment Rate (Pop. 25-64 Years)*	4.2%	4.4%
Poverty Rate* (25 Years or Older)	8.7%	9.6%

* Due to limitations in the available data from the Census Bureau, these figures are for individuals with some college or an associate degree.

Profile of Adults (Aged 25 or older) with Associate Degree or Higher, 2017



ADULT EDUCATIONAL ATTAINMENT	COUNTY	ME
Percent w/Associate Degree or Higher	32.5%	40.2%
Pop. Total w/Associate Degree or Higher	24,148	386,922
Median Annual Income (2017)*	\$41,452	\$42,761
Unemployment Rate (Pop. 25-64 Years)*	1.8%	2.0%
Poverty Rate* (25 Years or Older)	2.4%	4.2%

* Due to limitations in the available data from the Census Bureau, these figures are for individuals with a bachelor's degree or higher.

SOURCES: NEBHE analysis of data from the U.S. Census Bureau (2018 American Community Survey, 2017 Economic Census) and National Center for Education Statistics, IPEDS