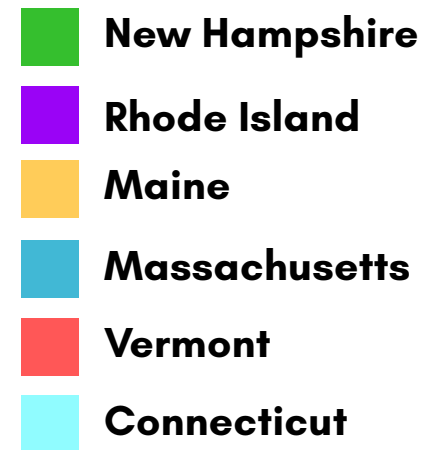
The background of the slide features a light blue gradient with numerous graduation caps (mortarboards) in various shades of blue and red, appearing to be falling or floating in the air. At the bottom, there are faint silhouettes of graduates in black gowns, some holding their caps high in the air.

# ***IMPLICATIONS OF KNOCKING AT THE COLLEGE DOOR IN NEW ENGLAND***

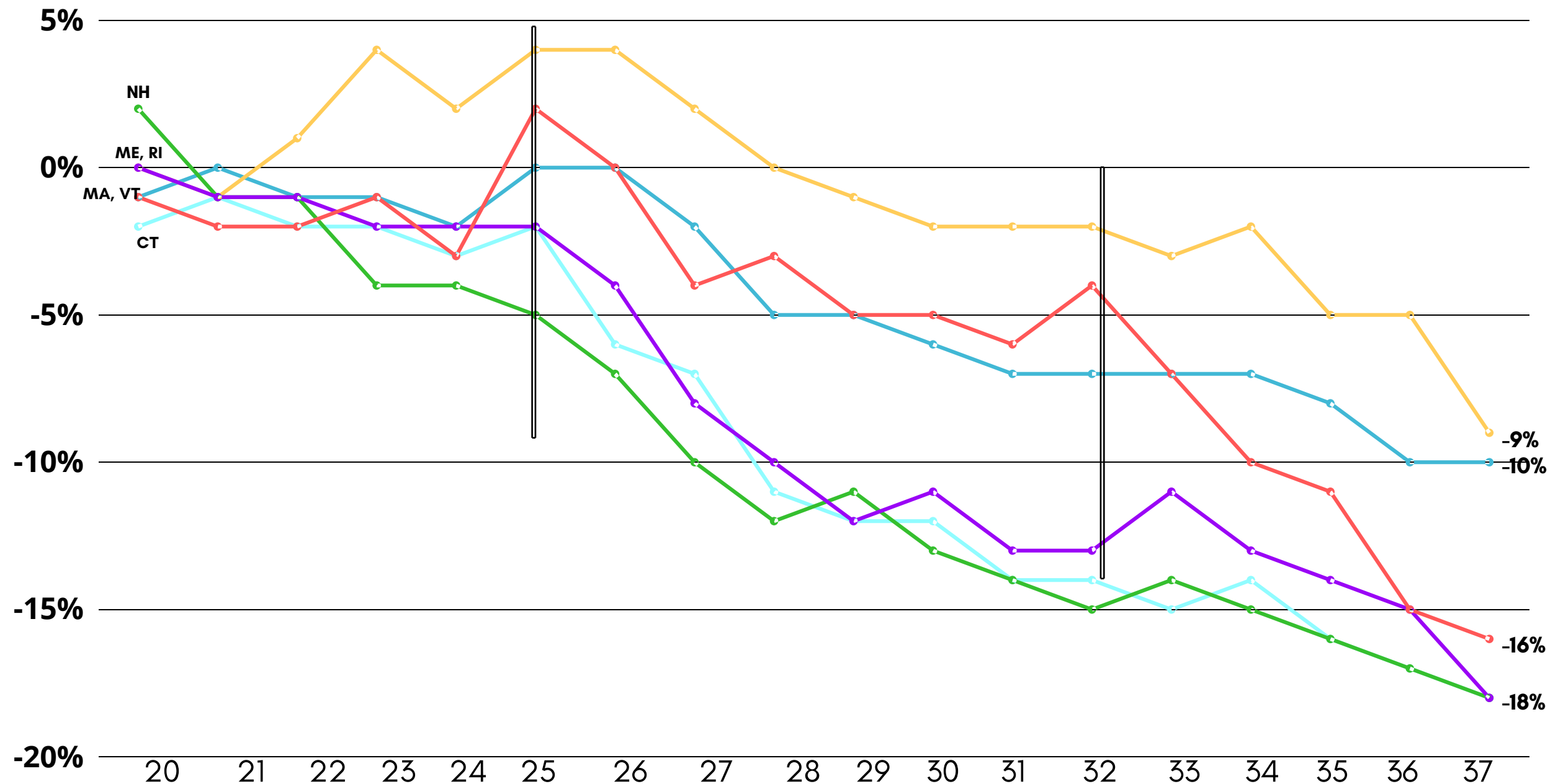
HOW THE DECLINING NUMBER OF HIGH SCHOOL GRADUATES WILL IMPACT  
OUR HIGHER EDUCATION COMMUNITY AND REGIONAL ECONOMY

# **New England Projections Over the Next Sixteen Years**

# General Overview



	2020	2025	2030	2037
NH	2%	-5%	-13%	-18%
ME	0%	4%	-2%	-9%
RI	0%	-2%	-11%	-18%
MA	-1%	0%	-6%	-10%
VT	-1%	2%	-5%	-16%
CT	-2%	-2%	-12%	-18%



# General Overview

State	2020	2025	2030	2037	
<b>CT</b>	43,180	43,280	38,290	36,120	<b>-7,060</b>
<b>ME</b>	14,300	14,810	14,000	12,930	<b>-1,730</b>
<b>MA</b>	78,590	79,420	74,770	71,310	<b>-7,280</b>
<b>NH</b>	16,060	14,920	13,610	12,850	<b>-3,210</b>
<b>RI</b>	11,630	11,390	10,260	9,510	<b>-2,120</b>
<b>VT</b>	6,520	6,520	6,710	5,550	<b>-970</b>
<b>NE</b>	170,000	170,600	158,020	148,490	<b>-25,510</b>

## A high school comparison:

CT: Danbury High School

**3,086**

ME: Lewiston High School

**1,526**

MA: Brockton High School

**4,032**

NH: Pinkerton Academy

**3,230**

RI: Cranston High School East

**1,658**

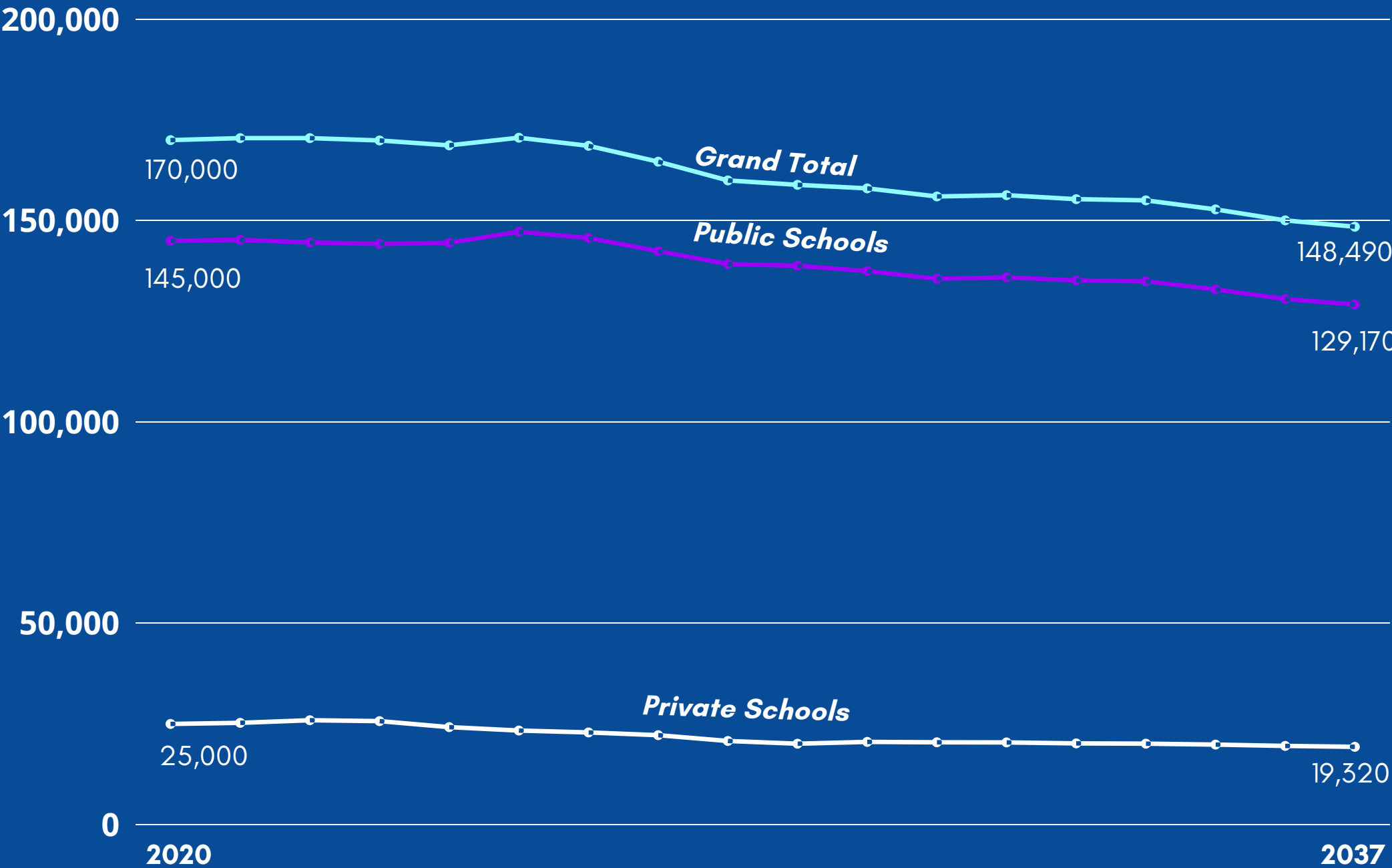
VT: Champlain Valley Union

**1,291**

# Changes by Sector

By 2037, the region's public high schools are projected to see an 11% decline in the number of graduates, and the data anticipates a larger decline of 23% among private high schools.

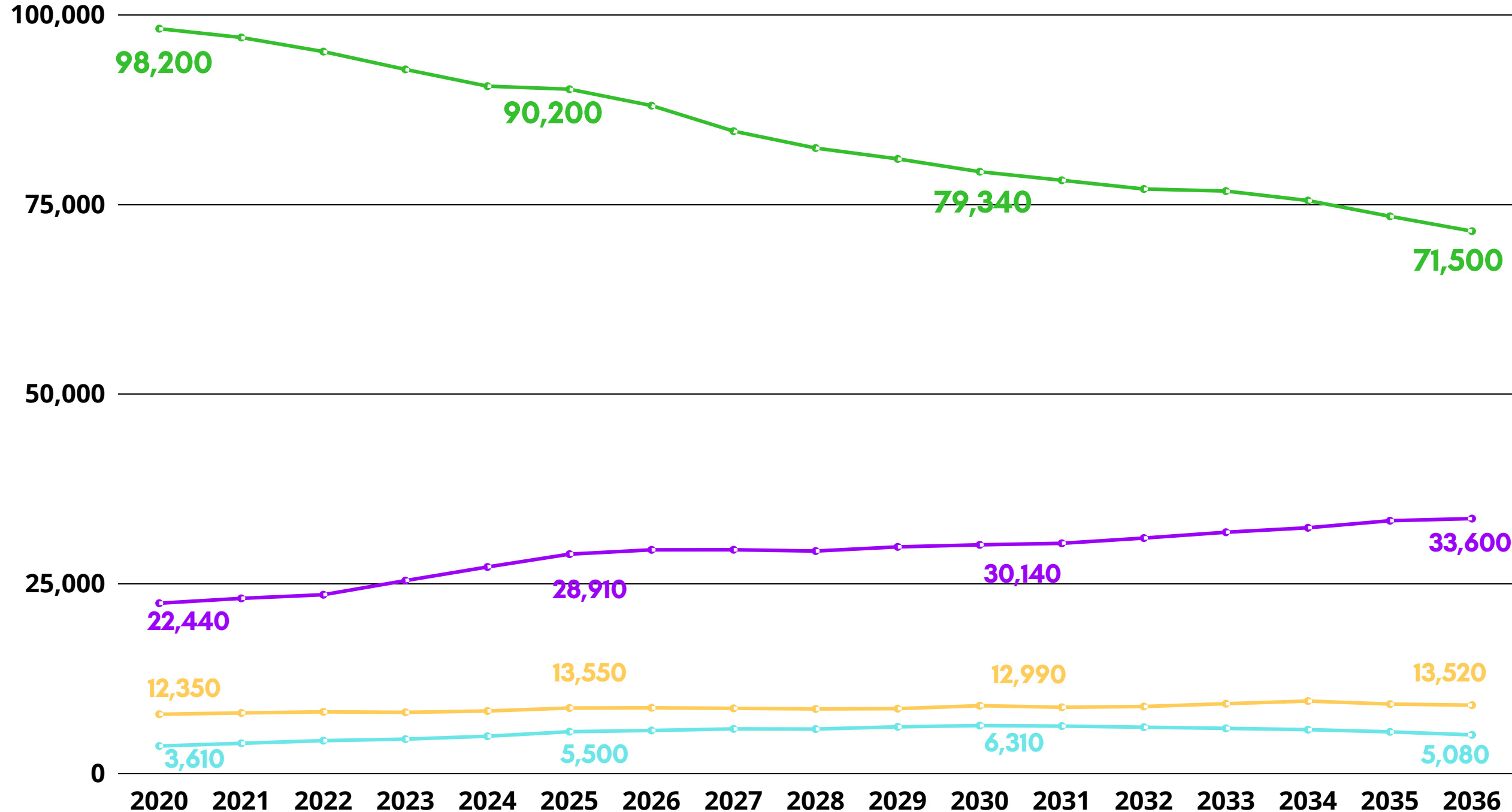
	2020	2025	2030	2037
Total	170,000	170,600	158,020	148,490
Public	145,000	147,240	137,480	129,170
Private	25,000	23,360	20,540	19,320



# Demographic Shifts

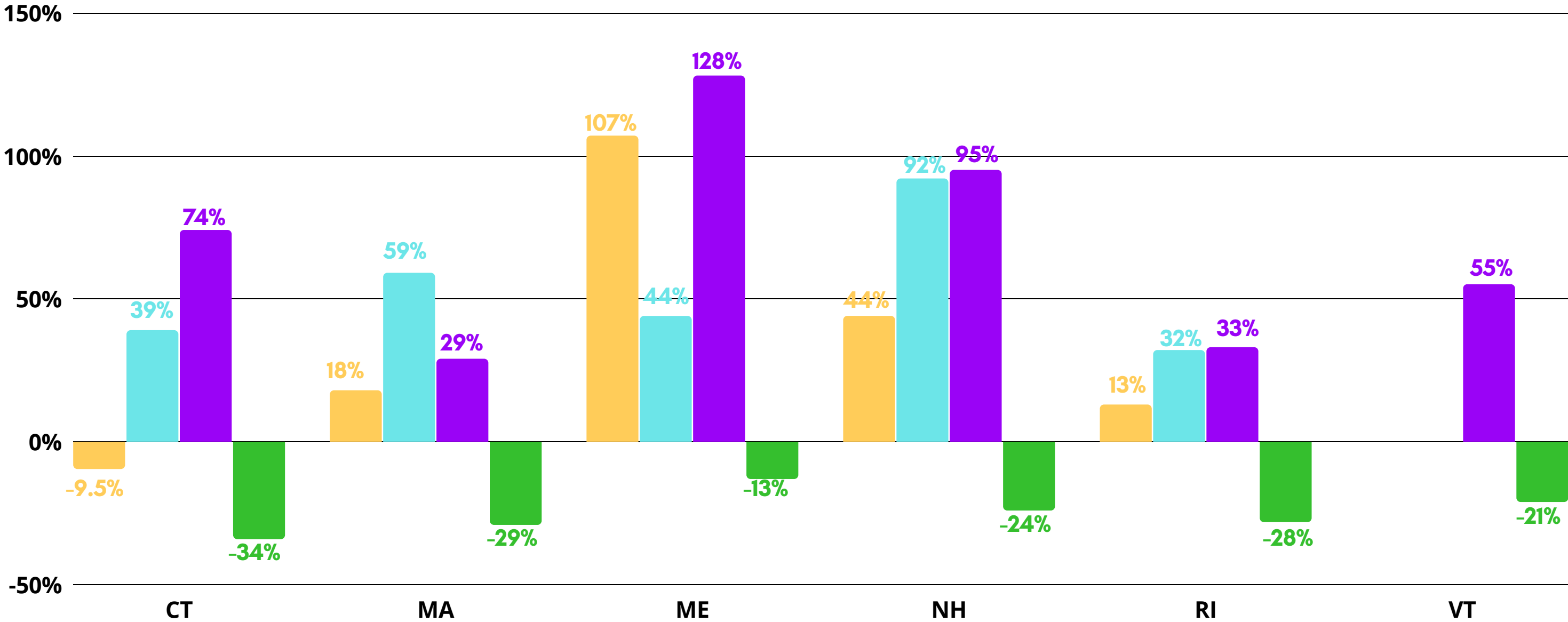


- white
- Hispanic
- Black
- Multi-racial



# Demographic Shifts

white Hispanic Black Multi-racial



# Summary

---

On Monday or Tuesday of next week, each of our registered guests here will be getting this recorded webinar, as well as a link to WICHE's Knocking at the College Door Report, and our New England specific report.

And now I will pass it off to **Paul Reville** – former MA Secretary of Education and Current Professor at Harvard Graduate School of Education, who has a lifetime of experience in education in Massachusetts and beyond.



