

# tuitionbreak

## Save on tuition as an out-of-state student

Choose from thousands of degree programs at New England state colleges and universities

The New England Board of Higher Education's Tuition Break program enables eligible students to pay significantly less than regular out-of-state tuition rate.

### How to be eligible

A resident of a New England state is eligible when enrolled in an approved degree program offered by a public college or university in another New England state. Connecticut, Maine, Massachusetts, New Hampshire, Rhode Island and Vermont are considered to be New England.

### Thousands of programs

You can receive the Tuition Break discount for certificates, associate, bachelor's, graduate and professional degree programs- in all areas of study.

Institutions participate in Tuition Break as either Flexible or Specialized.

- ① **Flexible** institutions offer the discounted tuition rate to all New England students.
- ② **Specialized** institutions offer the discounted tuition rate to New England students based on the student's enrolled major.

Over half of the institutions that participate in Tuition Break are Flexible. Specialized programs are added annually and updated lists are published on our website. The institutions decide which programs are added through a review process.

### Pay lower tuition

Students pay a tuition rate that is much lower than the regular out-of-state tuition. The average annual savings for a full-time student is \$8,500. The savings and tuition rates vary by institution. Tuition rates and savings for the participating colleges and universities are updated annually on our website.

### Tuition Example:

In State Rate:	\$8,000
Tuition Break Rate:	\$15,000
Out of State Rate:	\$25,000
<hr/>	
Tuition Savings:	\$10,000

### How to apply

To apply, students complete the admissions application for the college that offers a program through Tuition Break, and declare that program as their intended major. Eligibility is confirmed by the college following acceptance for admission.

Tuition Break is not a scholarship and does not require a separate application to receive the discounted tuition.

Currently enrolled students interested in switching to an eligible program need to check with the registrar.



# tuitionbreak

## Participating Colleges and Universities

### Connecticut

Connecticut State Community College  
Central Connecticut State University  
Eastern Connecticut State University  
Southern Connecticut State University  
University of Connecticut  
University of Connecticut School of Dental Medicine  
University of Connecticut School of Law  
University of Connecticut School of Medicine  
Western Connecticut State University

### Maine

Central Maine Community College  
Eastern Maine Community College  
Kennebec Valley Community College  
Maine Maritime Academy  
Northern Maine Community College  
Southern Maine Community College  
University of Maine  
University of Maine School of Law  
University of Maine at Augusta  
University of Maine at Farmington  
University of Maine at Machias  
University of Southern Maine  
Washington County Community College  
York County Community College

### New Hampshire

Great Bay Community College  
Keene State College  
Lakes Region Community College  
Manchester Community College  
Nashua Community College  
NHTI, Concord's Community College  
Plymouth State University  
River Valley Community College  
University of New Hampshire  
University of New Hampshire Franklin Pierce School of Law  
University of New Hampshire Manchester  
White Mountains Community College

### Rhode Island

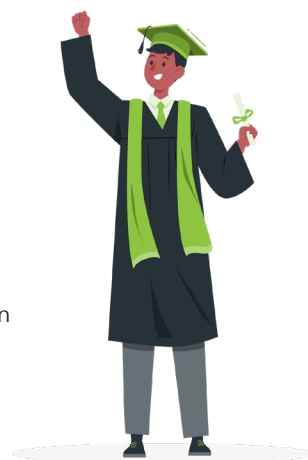
Community College of Rhode Island  
Rhode Island College  
University of Rhode Island

### Vermont

Community College of Vermont  
University of Vermont  
Vermont State University

### Massachusetts

Berkshire Community College  
Bridgewater State University  
Bristol Community College  
Bunker Hill Community College  
Cape Cod Community College  
Fitchburg State University  
Framingham State University  
Greenfield Community College  
Holyoke Community College  
Massachusetts Bay Community College  
Massachusetts College of Art and Design  
Massachusetts Maritime Academy  
Massachusetts College of Liberal Arts  
Massasoit Community College  
Middlesex Community College  
Mount Wachusett Community College  
North Shore Community College  
Northern Essex Community College  
Quinsigamond Community College  
Roxbury Community College  
Salem State University  
Springfield Technical Community College  
University of Massachusetts Amherst  
University of Massachusetts Boston  
University of Massachusetts Chan Medical School  
University of Massachusetts Dartmouth  
University of Massachusetts Lowell  
University of Massachusetts School of Law  
Westfield State University  
Worcester State University



### Use the website to:

- check your eligibility
- find participating colleges & universities
- see current academic year tuition rates
- search for academic programs
- get information in Spanish
- look at frequently asked questions



[nebhe.org/tuitionbreak](https://nebhe.org/tuitionbreak)